

Type YSF-5, 6 Safety Valve (Full Bore Type) Steam Boiler Pressure Vessel



Type YSF-5



Type YSF-6

■ Features

- Simple structure and outstanding performance.
- Superb performance, followed by strict quality control procedure.
- High impact resistance and good abrasion resistance : The disc and seat are stainless steel welded with satellite.
- Test lever attached : Periodical performance inspections can be conducted.
- Approval from the Korea Occupational Safety and Health Agency (KOSHA).

■ Specifications

Type	YSF-5	YSF-6
Test lever	Yes	Optional
Applicable fluid	Steam, air	Liquid
Set pressure range	1~10kgf/cm ² g	
Fluid temperature	220° C below	
End connection	KS PT SCREW	
Materials	GC200 : Cast iron, Disc, seat: STS (Stellite welding)	
Hydraulic test pressure	15kgf/cm ² g	

▶ The JIS and ANSI flanges are available by made-to-orders.

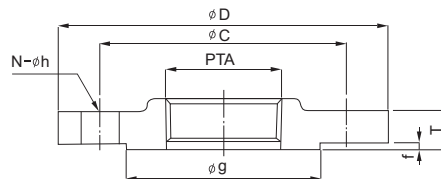
■ Dimensions

(mm)

Size Inlet X Outlet	Seat diameter Ds	Throat diameter dt	Throat area a(mm ²)	Lift q	Face to Face		Height(h)		Connection size		Weight(kg)	
					L1	L2	YSF-5	YSF-6	IN	OUT	YSF-5	YSF-6
20(3/4")X25(1")	18	15	176.5	3.8	50	74	182	180	1"	1"	33	5.0
25(1")X32(1 1/4")	22	19	283.3	5.0	60	85	215	212	1 1/4"	1 1/4"	5.2	9.2
40(1 1/2")X50(2")	35	30	706.5	7.5	80	100	295	293	2"	2"	9.6	16.0
50(2")X65(2 1/2")	45	38	1133.5	9.5	90	115	335	332	2 1/2"	2 1/2"	16.0	3.2

■ For reference

In order to install the type YSF-5, 6 as a flange, a coupling flange is required by made-to-order.



» Dimensions (KS B 6216 10K RF FLANGE)

(mm)

Category Size	PTA	ø D	ø C	ø g	N-ø h	f	T
20(3/4")	1"	125	90	67	4-19	1	18
25(1")	1 1/4"	135	100	76	4-19	2	20
40(1 1/2")	2"	155	120	96	8-19	2	20
50(2")	2 1/2"	175	140	116	8-19	2	22

■ Dimensional drawing

